

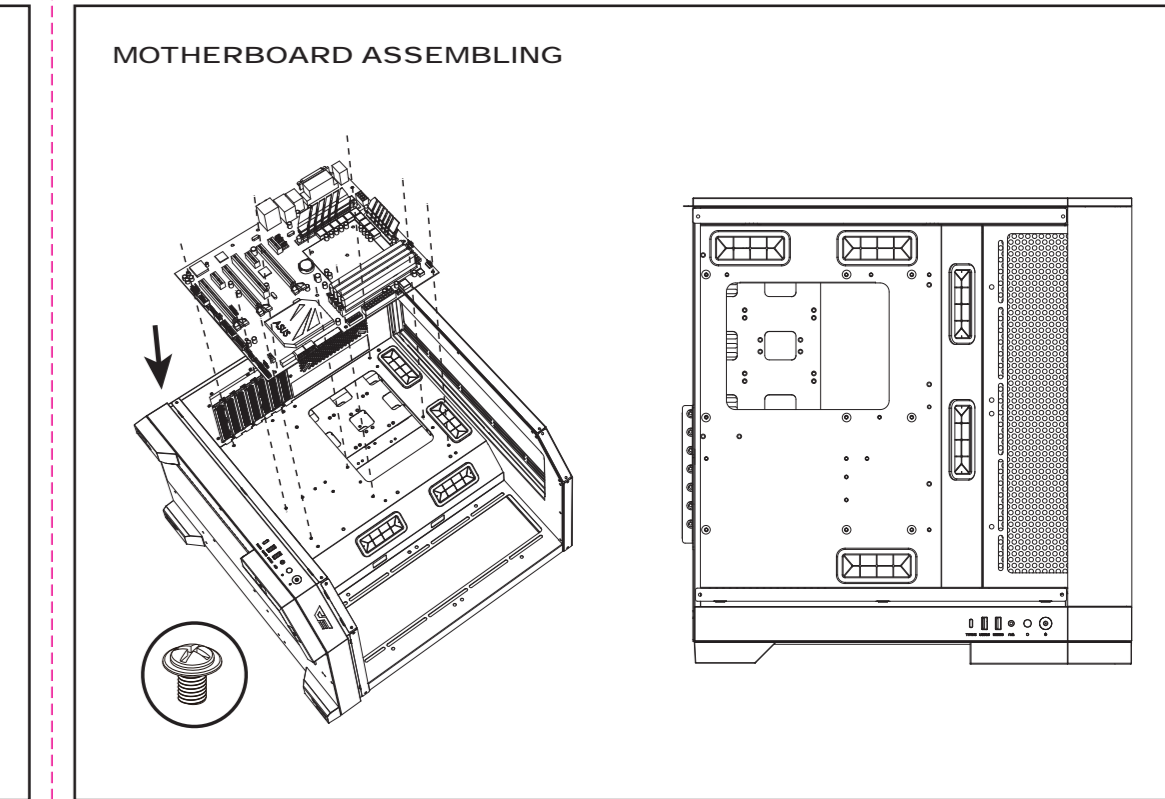
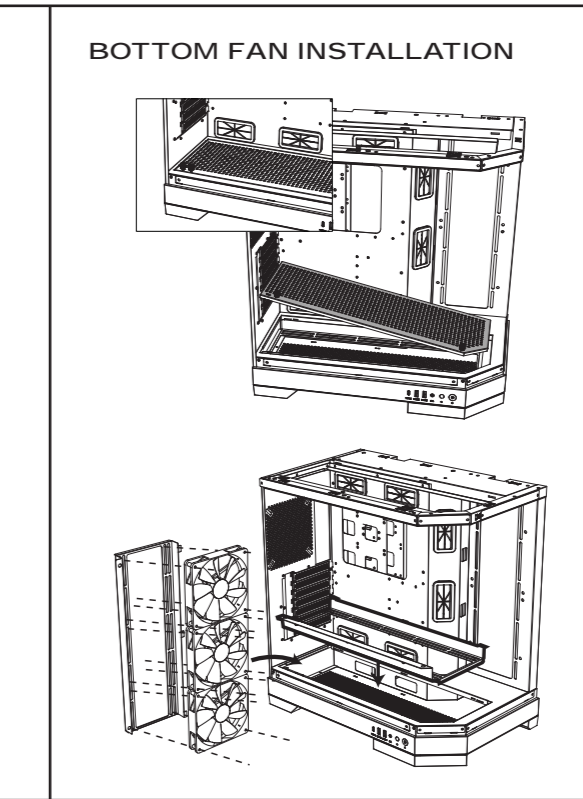
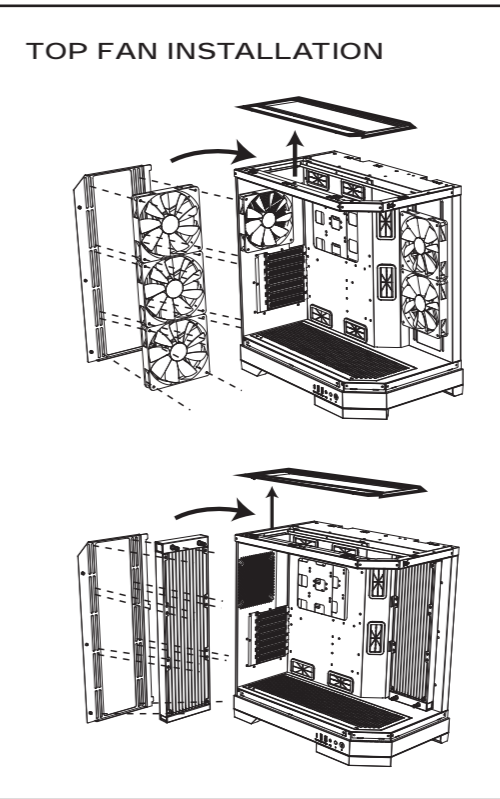
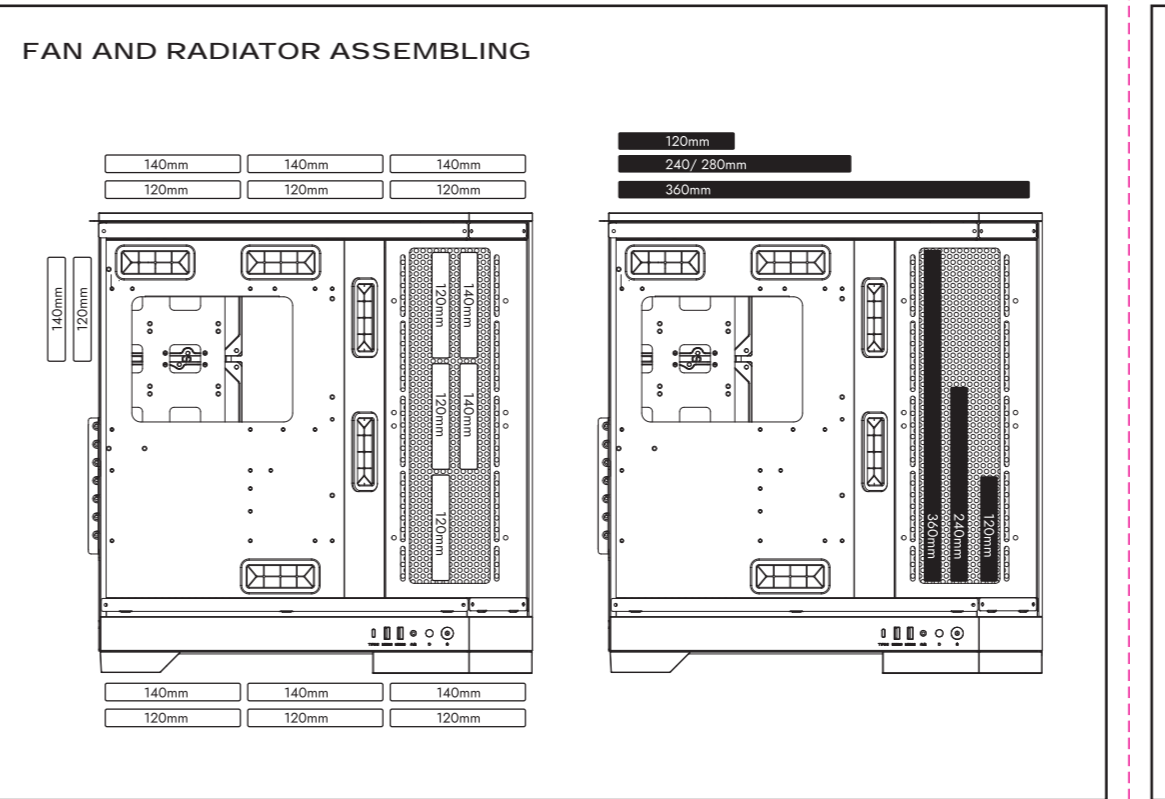
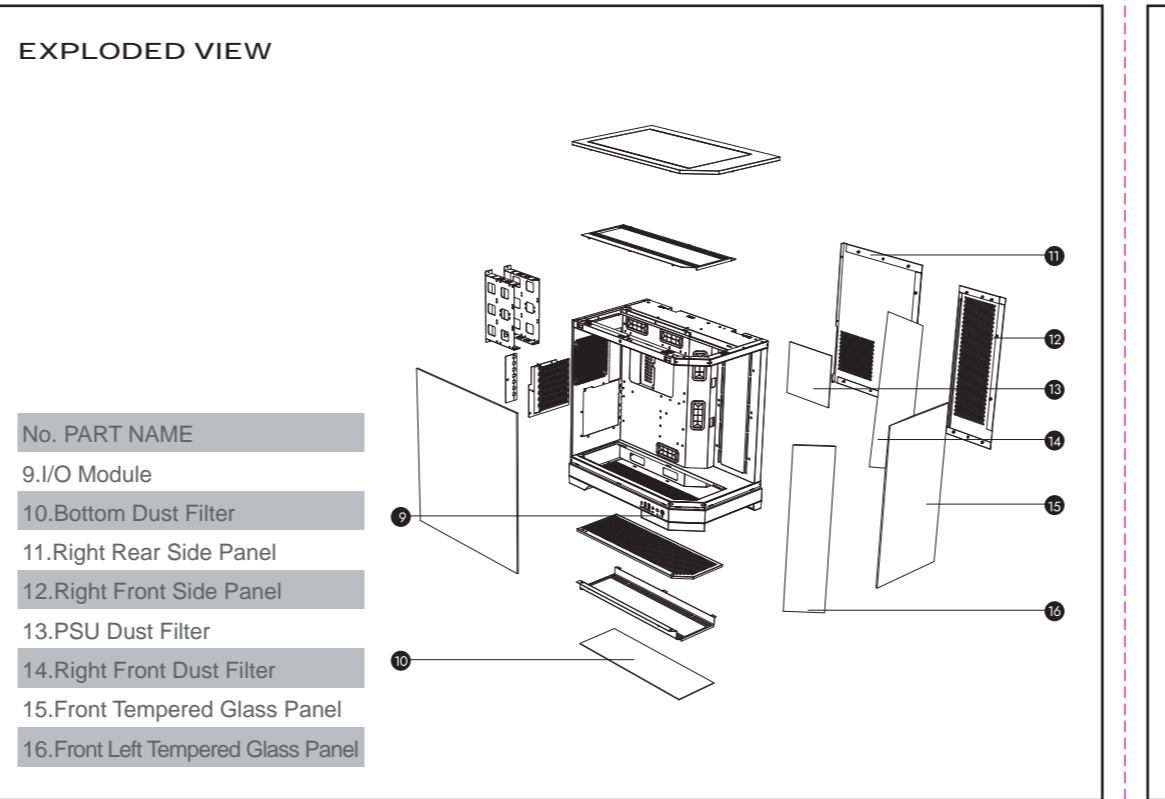
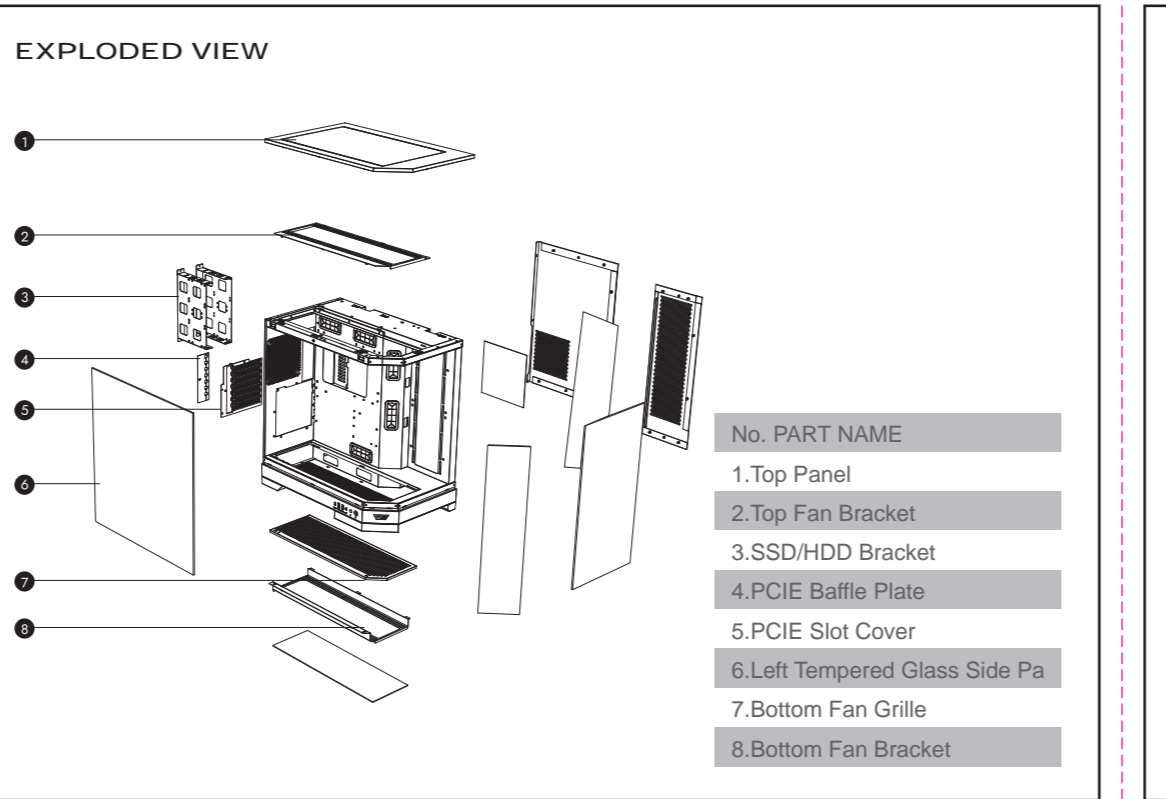
Dear customers
 Thanks for purchasing our computer case. Please read through the entire manual before installation. If you received your case damaged, missing parts or having any other questions, please feel free to email us at support@mydiypcusa.com.

Warning
 Installation must be performed with power supply off at all time, otherwise electrical damage on the computer case may occur. Please double check on all the connections before turning on the power supply for testing.

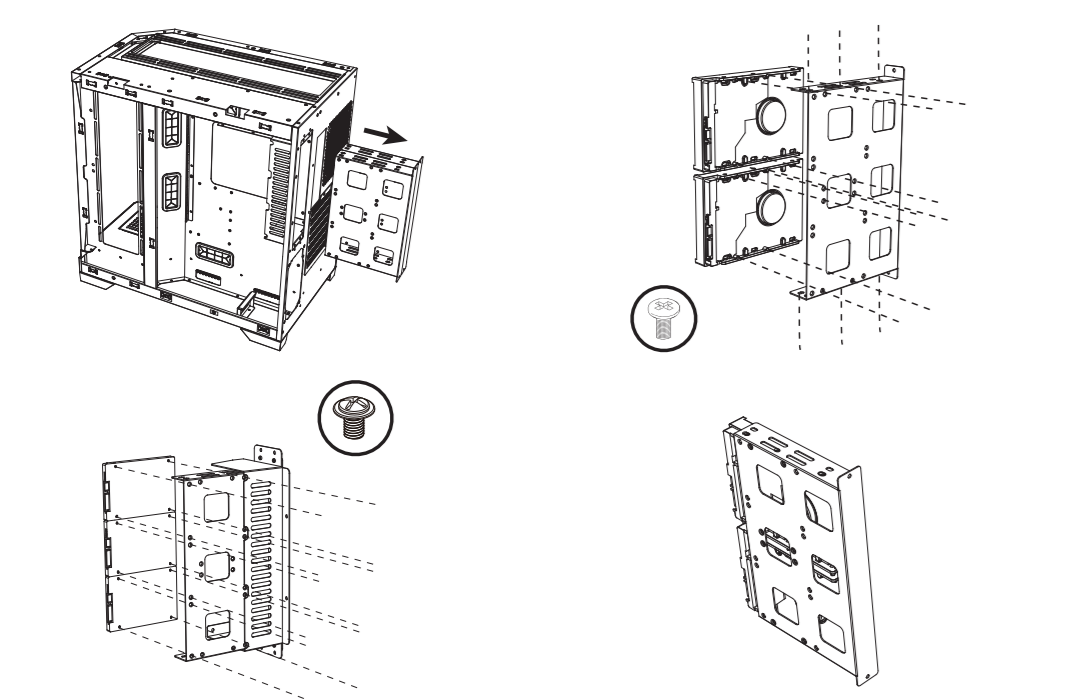
General information of DIYP support
 We provide 1 year manufacturer warranty on all computer cases we sell, for all the components, including all the electronic parts such as fans, audio jet, power switch etc. But we do not cover shipping damage or physical damage or any wear and tear, or any damage due to installation, or any damage due to improper usage.

ACCESSORIES

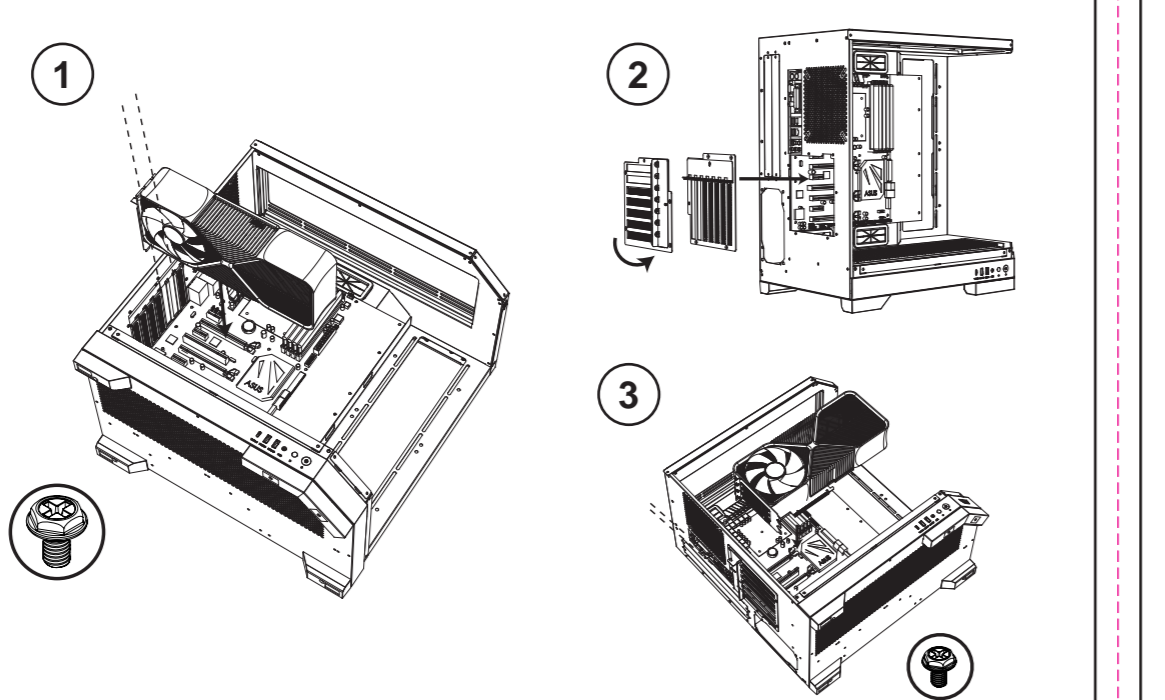
x9	x3	x28	x24	x4	x10
M/B SCREWS / SSD SCREWS	MOTHERBOARD STAND	HARD DISK SCREWS(KM6#*6)	HARD DISK SCREWS(KM3#*6)	PSU SCREWS	ZIP TIE
x1	x1	x2	x1		
COPPER PILLAR SLEEVE	BUZZER	SNAP BUCKLE	VGA STAND (BUNDLED ON THE CHASSIS)		



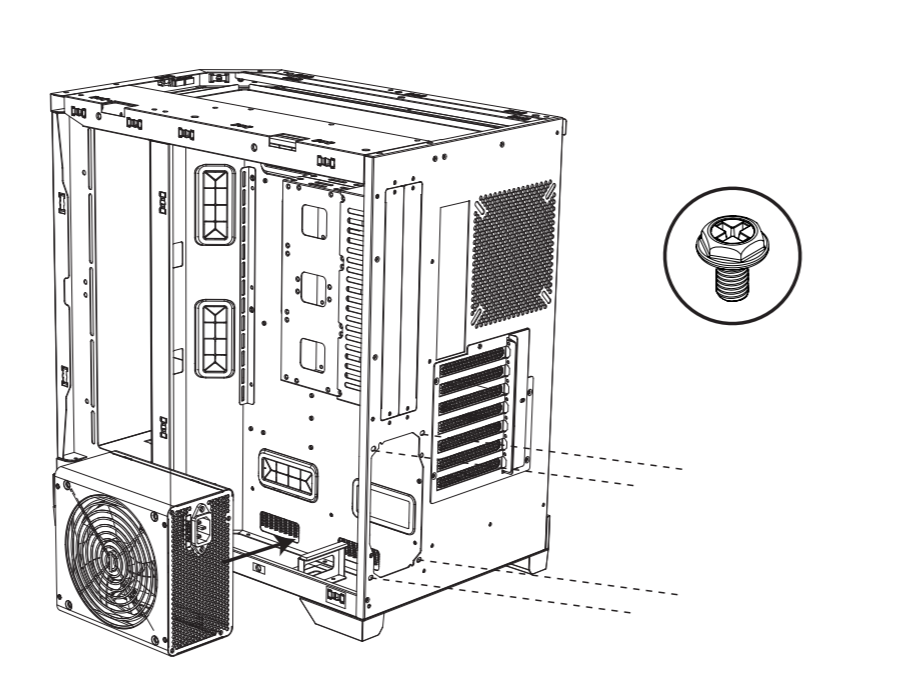
3.5" HDD AND 2.5" SSD ASSEMBLING



GPU ASSEMBLING

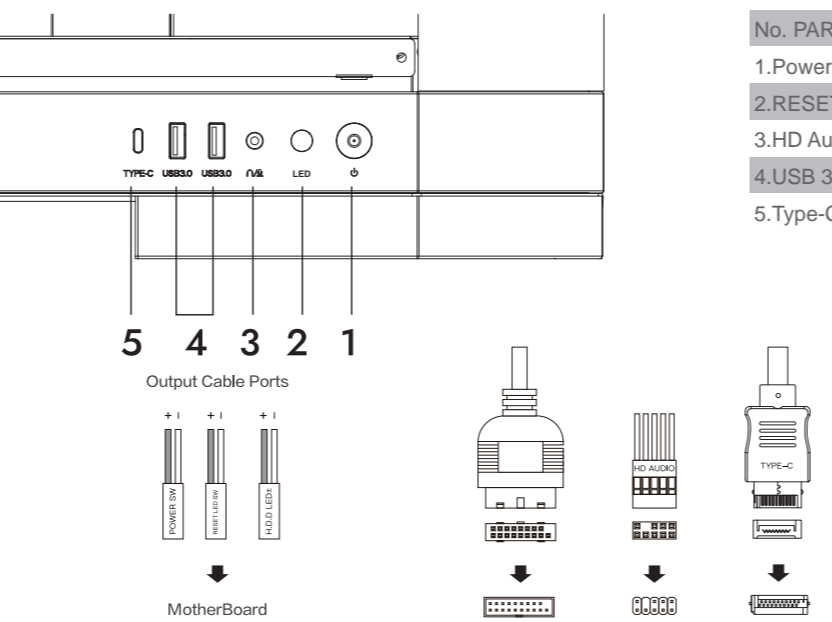


PSU ASSEMBLING



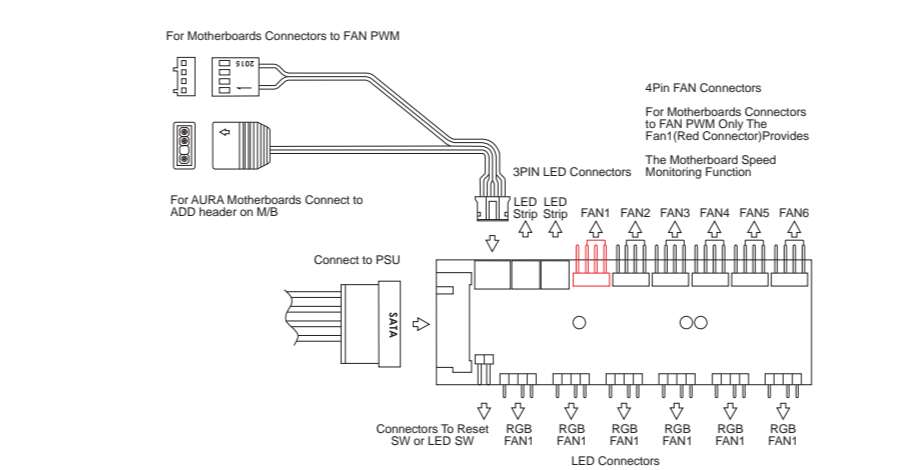
CABLE CONNECTION

Please refer to the manual that came with your Schematic diagram of wire interface motherboard for any specific connection instructions.



- No. PART NAME
- 1.Power
 - 2.RESET LED SW
 - 3.HD Audio
 - 4.USB 3.0 *2
 - 5.Type-C

WIRING DIAGRAM OF ARGB HUB



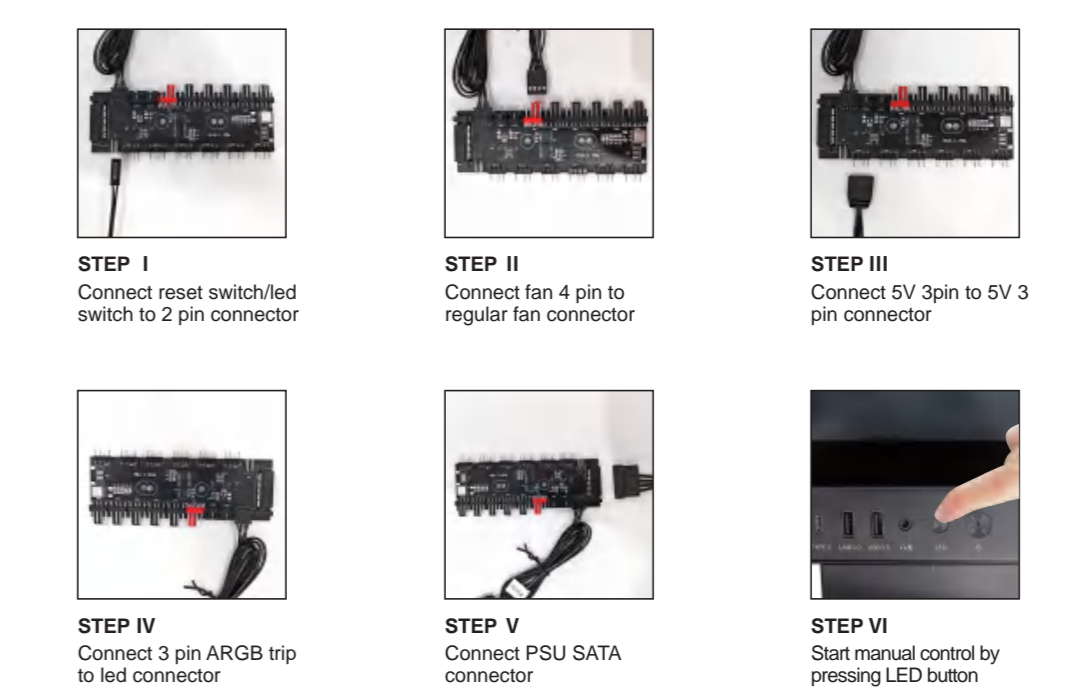
Specification

- 6 port x 5V 3 pin connector of fan
- 6 port x 4 pin connector of fan
- 2 port x 3 pin connector of LED strip
- 1 port x PWM cable connect to M/B
- 1 port x 5V 3pin cable connect to M/B
- 1 port x SATA connect to power supply
- 1 port x2 pin connect to LED switch

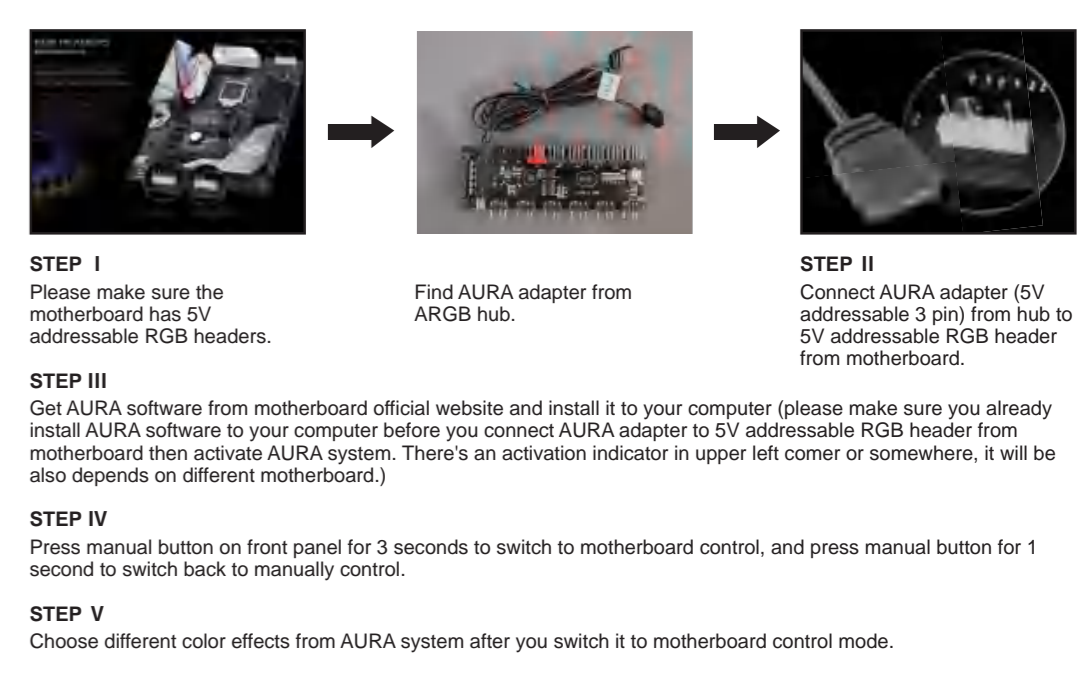
Function

- 1.Manual control by pressing LED button
- 2.Press LED button for 3 seconds change mode to motherboard control
- 3.Press LED button for 5 seconds to turn off LED power
- 4.Press LED button back to manual control by LED button
- 5.Through the mainboard's PWM to control the PWM fan speed
- 6.Up to 6pcs of ARGB fan and 2pcs of LED strip can be connected
- 7.With memory function
8. Random RGB effect from the first start

HOW TO USE MANUAL CONTROL



HOW TO USE AURA ADAPTER TO CONTROL BY MOTHERBOARD



STEP I

Please make sure the motherboard has 5V addressable RGB headers.

STEP II

Find AURA adapter from ARGB hub.

STEP III

Connect AURA adapter (5V addressable 3 pin) from hub to 5V addressable RGB header from motherboard.

STEP IV

Get AURA software from motherboard official website and install it to your computer (please make sure you already install AURA software to your computer before you connect AURA adapter to 5V addressable RGB header from motherboard then activate AURA system. There's an activation indicator in upper left corner or somewhere, it will be also depends on different motherboard.)

STEP V

Press manual button on front panel for 3 seconds to switch to motherboard control, and press manual button for 1 second to switch back to manually control.

STEP VI

Choose different color effects from AURA system after you switch it to motherboard control mode.